



THE
REMAX
COLLECTION
CRYSTAL

The RE/MAX Collection Crystal

AGENCY — ROMA

VITERBO — VT

Exclusive villa with
private park of 1 hectare
in the residential La
Quercia - Viterbo

€ 949.000

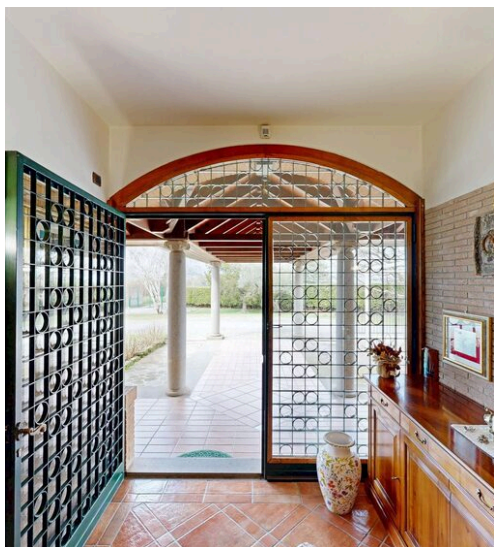
PRICE

429 m²

SQUARE METRES

5

ROOMS



DESCRIPTION

Exclusive villa with private park of 1 hectare in the residential La Quercia - Viterbo

In Viterbo, at La Quercia/Respoglio, we offer for sale a villa that combines aesthetics, comfort, harmony and functionality in a context of absolute privacy. Here is where the silence of the natural landscape dialogues with the discreet and comfortable presence of the city. We are located in one of the most exclusive residential areas of Viterbo, a short distance from the Basilica of La Quercia and not far from the famous Villa Lante. The house is independent and has a unique character. Surrounded by a lush private park of about one hectare, the property is spread over two levels above ground, with a total area of about 400 square meters of floor space. The garden, enriched with ornamental trees and botanical varieties, also offers the possibility of creating a large swimming pool to transform the outdoor area into an experience, an oasis of well-being and daily relaxation. The architecture is distinguished by elegant lines and generous volumes, with interiors designed to offer maximum livability and refinement. The villa, which is being sold is already divided into two completely

autonomous housing units, ideal for large families, hospitality or multigenerational solutions. Dwelling A: A large double living room with large windows overlooking the patio and porch, has a central fireplace with a strong scenic impact: the chimney rises up to the crystal of the high ceiling from which the view of the sky opens. The ceilings are wooden or with exposed wooden beams and give warmth and timeless elegance. The kitchen is livable and expansive, designed to live and welcome, has a refined and comfortable adjacent dining room. There are four spacious and bright bedrooms, four bathrooms and two practical storage rooms. Access to the outdoor patio and porch is direct, everything is perfect for convivial moments outdoors and to open a dialogue with nature, without sacrificing the practicality of the city. Dwelling B: You enter from the bright living area, featuring large windows with an invigorating view of the greenery. The kitchen is modern and sophisticated and complements a beautiful and convivial dining area. There are three bedrooms, three elegantly...

 **429 m²**
AREA

 **5**
ROOMS

 **8**
BATHROOMS

 **€ 949.000**

FEATURES



WIDE SPACES



BOX CAR



GARDEN



MORE THAN 5 ROOMS



LAND



THE **REMAX**
COLLECTION
CRYSTAL

The RE/MAX Collection
Crystal

CONTACTS

Book a visit

Contact us for more information
or to schedule a viewing.



PHONE
06 92594801



EMAIL
crystal@remax.it



ADDRESS
via giuseppe mercalli 3, Roma, Roma